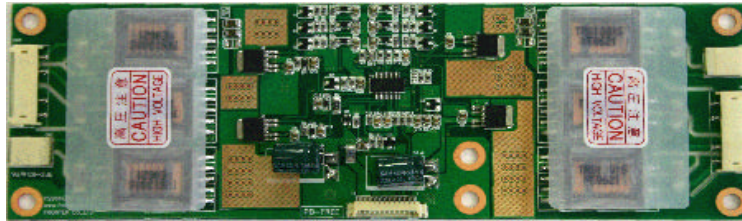


# HR I06L20019



INVERTER ORIGINAL REFER. EQUIVAL. BI2036C
--



Dimensiones / size : 188mm x 60mm

Conector Control / Control Connector											
12	11	10	9	8	7	6	5	4	3	2	1
15V	15V	15V	GND	GND	GND	GND	GND	on-off	GND	Br.	GND

LCD panel manuf.	LCD Panel cod.
SAMSUNG	V201V1-T01
AUOPTRONICS	A201SN01 / 02
CHIMEI	V201V1-T01

Marca / Brand	Model
SOGO	SS 2002

Observaciones / Remarks
Se adjuntan instrucciones para adaptar conexión cable control inverter original.
Instructions to adapt control cable connection of original inverter included in the box.